


| | | |
|---------------------------|-------------------------------|---|
| 22260084 | DATA SHEET |  |
| Valid from: 12.09.2019 | AB-C5-M12MS-M16-PO-0,5 | |

Description

- Sensor/Actuator flush-type socket, 5-pos., A-coded, M12 quick locking
- Front/screw mounting with M16 thread, can be positioned, 0.5 m TPE litz wire, 5 x 0.34 mm²



General characteristics

| | |
|---------------------------------|---|
| Number of poles | 5 |
| Length of cable | 0.5 m |
| Connection method | Individual wires |
| Mounting type | Front mounting M16 x 1.5 with locking nut |
| Status display | No |
| Coding | A-standard |
| Degree of protection | IP 67 |
| Ambient temperature (operation) | -25 to +90 °C (-13 to 194 °F) (cable fixed installation) -25 to +85 °C (-13 to 185 °F) (connector) |

Electrical properties

| | |
|------------------------------|--------|
| Rated voltage | 60 V |
| Rated current at 40 °C | 4 A |
| Surge voltage category | II |
| Pollution degree | 3 |
| Insulation resistance (min.) | 100 MΩ |
| Contact resistance (max.) | 3 mΩ |

Mechanical properties


Connector

| | |
|---------------------------|-------------------------------|
| Contact, material | CuZn |
| Contact surface, material | Ni/Au |
| Contact carrier, material | PA66 |
| Knurl, material | Zinc die-cast (nickel-plated) |
| Sealing, material | NBR |

Line

| | |
|------------------------------------|---------------------------------|
| Cable type | TPE litz wire |
| Conductor, material | Tin plated Cu litz wires |
| Conductor insulation, material | TPE |
| Core diameter including insulation | 1.2 mm ±0.07 mm |
| Thickness, insulation | 0.21 mm |
| Wire colours | Black, brown, blue, white, grey |
| Conductor structure signal line | 7 x 0.25 mm |
| Conductor cross section | 0.34 mm ² |
| AWG signal line | 22 |
| Insulation resistance (min.) | 20 MΩ*km |
| Volume resistance (max.) | 57.6 mΩ/m |
| Nominal voltage, conductor | 300 V |
| Test voltage, conductor | 2000 V AC |

| | | |
|---|---------------------------------------|-------------|
| Creator: MOKO2/PDP Released: IVSE1/PDP | Document: DB22260084EN Version: 02 | Page 1 of 2 |
|---|---------------------------------------|-------------|

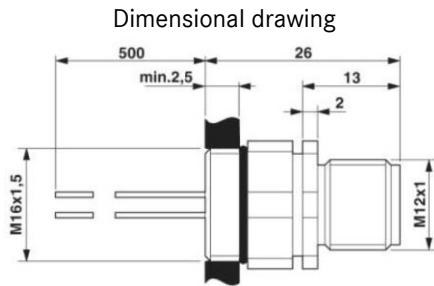
| | | |
|---------------------------|-------------------------------|---|
| 22260084 | DATA SHEET |  |
| Valid from: 12.09.2019 | AB-C5-M12MS-M16-PO-0,5 | |

Standard

M12-connector

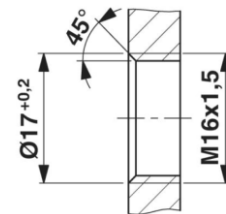
IEC61076-2-101

Technical drawing



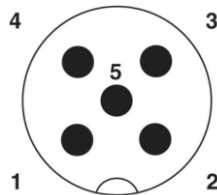
M12 flush-type socket, can be positioned

Dimensional drawing



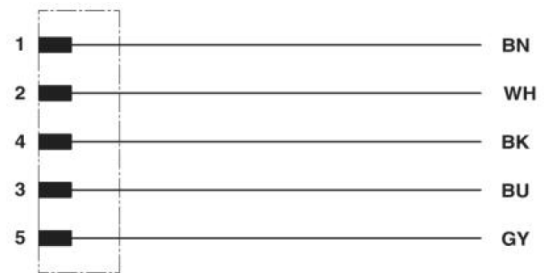
Housing cutout for M16 fastening thread, mounting panel with thread

Drawing



Pin assignment M12 male connector, 5-pos., A-coded, male side

Circuit diagram



Contact assignment of the M12 plug and the M12 socket

Application range

Connection of enclosures and cabinets

Note

Photographs are not true to scale and do not represent detailed images of the respective products.

| | | |
|---|---------------------------------------|-------------|
| Creator: MOKO2/PDP Released: IVSE1/PDP | Document: DB22260084EN Version: 02 | Page 2 of 2 |
|---|---------------------------------------|-------------|