
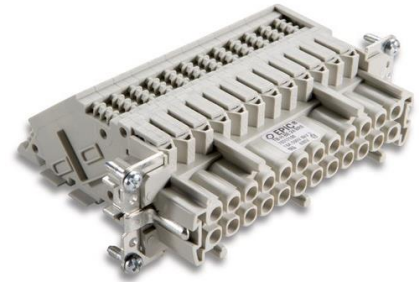


70317100	DATA SHEET	
Valid from: 17.09.2018	EPIC® TB-H-BE 24	

Description

- For convenient, clear wiring in control cabinets. Assembly in panel-mount base housings.
- Standard H-BE inserts for use with switch cabinets
- Pluggable with H-BE male inserts in hoods
- Fastening on side = "left" means that when mounting the terminal adapter on the left wall of a control cabinet, the PE connection and pin "1" are on the "top" side



General Characteristics

Series	TH-H-BE
Version	Female BRE right Female BLI left (Article 70316100)
Number of Contacts	24 + PE
Termination Methods	Screw termination: 0.5 - 4 mm ²
Temperature Range	-40°C to +100°C, short-term up to +125°C

Mechanical Characteristics

Cycle of mechanical operation	200
-------------------------------	-----

Electrical Characteristics

Rated Voltage, IEC	500 V
Rated Voltage, UL	600 V
Rated Voltage, CSA	600 V
Rated Impulse Voltage	6 kV
Rated Current, IEC	16 A
Rated Current, UL	16 A
Rated Current, CSA	16 A
Contact Resistance	< 2 mOhm
Degree of Soiling	3

Materials and Surfaces

Contacts	Copper alloy, hard silver -plated
Insulating Body	PC
Flammability Class according to UL 94	V0


Approvals

UL-Approval, E-File-Number	E75770
----------------------------	--------

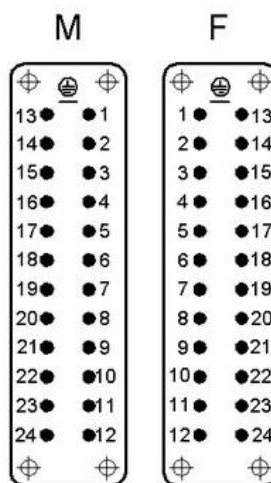
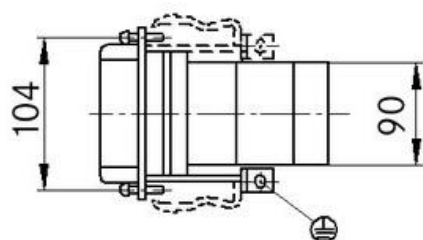
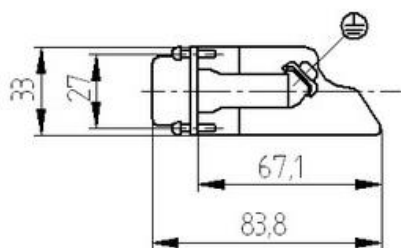
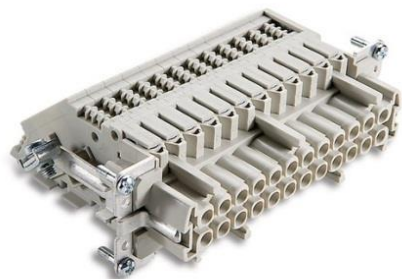
Standard

Safety Standard	IEC 61984, UL 1977
-----------------	--------------------

Creator: MANA2/PDP Released: IVSE1/PDP	Document: DB70317100EN Version: 01	Page 1 of 2
-------------------------------------------	---------------------------------------	-------------

70317100	DATA SHEET	
Valid from: 17.09.2018	EPIC® TB-H-BE 24	

Technical Drawing



Info

Plug connection for control cabinets

Application range

Control cabinet manufacturing
Plant engineering

Remark

Photographs are not to scale and do not represent detailed images of the respective products.

Creator: MANA2/PDP Released: IVSE1/PDP	Document: DB70317100EN Version: 01	Page 2 of 2
-------------------------------------------	---------------------------------------	-------------