
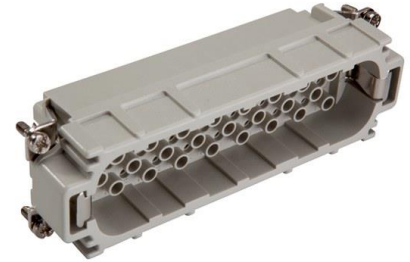


11272000	DATA SHEET	
Valid from: 17.09.2018	EPIC® H-D 64 SCM / H-D 64 BCM machined	

Description

- H-D inserts for stamped and machined crimp contacts
- Inserts of the connector series H-D are designed for applications in which a high number of contacts are required.



General Characteristics

Series	H-D 64
Version	Male/Female(Article 11273000)
Number of Contacts	64 + PE
Termination Methods	Crimp termination: 0.14 - 2.5 mm ²
Temperature Range	-40°C to +100°C, short-term up to +125°C

Mechanical Characteristics

Cycle of mechanical operation	100
-------------------------------	-----

Electrical Characteristics

Rated Voltage, IEC	250 V
Rated Voltage, UL	250 V
Rated Impulse Voltage	2.5 kV
Rated Current, IEC	10 A
Rated Current, UL	10 A
Contact Resistance	< 2 mOhm
Degree of Soiling	3

Materials and Surfaces

Contacts	Copper alloy, hard silver/gold-plated
Insulating Body	PBT
Flammability Class according to UL 94	V0

Approvals

UL-Approval, E-File-Number	E75770
----------------------------	--------

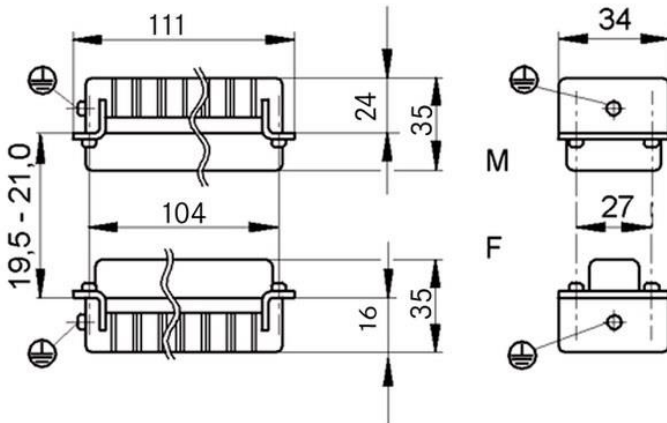
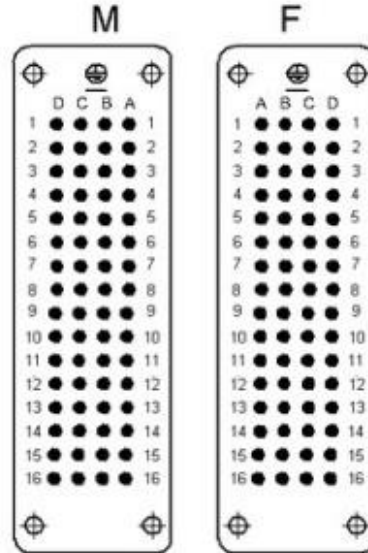
Standard

Safety Standard	IEC 61984, UL 1977
-----------------	--------------------

Creator: MANA2/PDP Released: IVSE1/PDP	Document: DB11272000EN Version: 01	Page 1 of 2
---	---------------------------------------	-------------

11272000	DATA SHEET	
Valid from: 17.09.2018	EPIC® H-D 64 SCM / H-D 64 BCM machined	

Technical Drawings



Industrial machinery and plant engineering



Space requirement

Application range

Plant engineering
Light & sound technology

Remark

Photographs are not to scale and do not represent detailed images of the respective products.

Creator: MANA2/PDP Released: IVSE1/PDP	Document: DB11272000EN Version: 01	Page 2 of 2
---	---------------------------------------	-------------