


10019000	<b>DATA SHEET</b>	
Valid from: 29.08.2022	<b>EPIC® CODING PIN</b>	

## Description

- Accessories for an effective use of EPIC® rectangular connectors



## Materials / Surfaces

EPIC® CODING PIN

Steel, nitrided

## Versions

Article number	Article description
10019000	EPIC® Coding Pin H-BE
10019400	EPIC® Coding Pin STA
10019401	EPIC® Coding Pin Quick & Easy

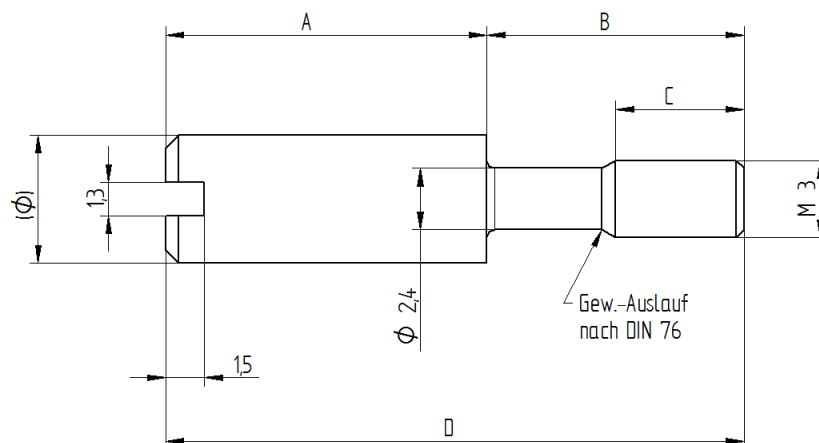
## Material and Surface

CODING PIN

Steel


SURFACE COATING

Nitrated



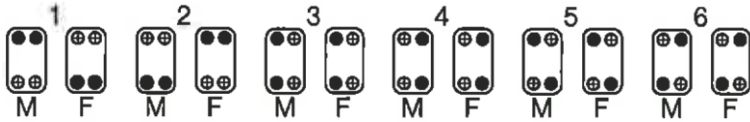
Articel Number	Dimension A [mm]	Dimension B [mm]	Dimension n C [mm]	Dimension D [mm]	Diameter Ø [mm]
10019000	13	10	5	(22,5)	5
10019400	9	13	5	(22)	5
10019401	12	10	5	(22,5)	3,5

Creator: BEGE1/PDP Released: IVSE1/PDP	Document: DB10019000EN Version: 04	Page 1 of 2
---	---------------------------------------	-------------



10019000	<b>DATA SHEET</b>	
Valid from: 29.08.2022	<b>EPIC® CODING PIN</b>	

### Coding possibilities

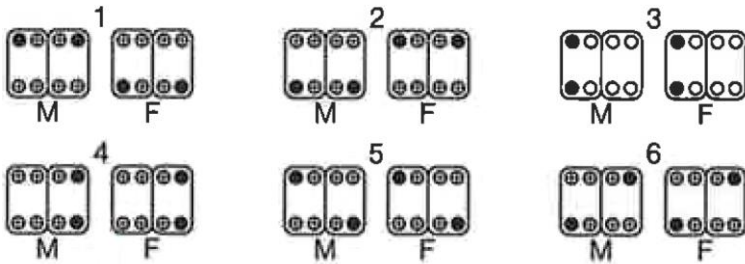
#### 1 Einsatz / 1 insert / 1 insert



Legende:

-  Coding Pin
-  Screw

#### 2 Einsätze / 2 inserts / 2 inserts



### Product features

For rectangular connector inserts, the key pin replaces one or more fastening screws. This enables simple coding.

### Remark

Photographs are not to scale and do not represent detailed images of the respective products.

Creator: BEGE1/PDP Released: IVSE1/PDP	Document: DB10019000EN Version: 04	Page 2 of 2
---	---------------------------------------	-------------