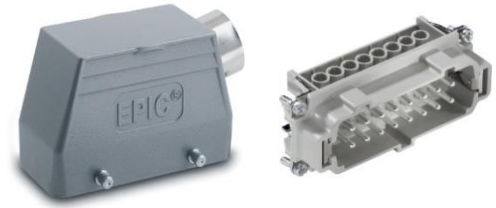


|                           |                                    |   |
|---------------------------|------------------------------------|---|
| 75009646                  | <b>DATA SHEET</b>                  |  |
| Valid from:<br>25.02.2019 | <b>EPIC® Kit H-BE 16 SS TS M25</b> |   |

## Description

- Optimally matched components.
- H-BE inserts with screw termination up to 2.5 mm<sup>2</sup> connection cross-section.
- The possibility of using higher voltages and currents as well as high reliability characterizes the EPIC® H-BE series.
- Reduced order costs. No wrong orders.



## Components

|                                  |                                |
|----------------------------------|--------------------------------|
| ++Item number of the combination | 75009646                       |
| Housing                          | EPIC® H-B 16 TS M25 (19082000) |
| Insert                           | EPIC® H-BE 16 SS DR (10194000) |

## General characteristics

|                             |   |
|-----------------------------|---|
| Insert                      | H-BE 16                                   |
| Gender                      | Male                                      |
| Connection type             | Screw termination                         |
| Connection cross-section    | 0.5 – 2.5 mm <sup>2</sup>                 |
| Wire protection             | Yes                                       |
| Number of contacts          | 16 + PE                                   |
| Contact diameter            | 2,5 mm                                    |
| Mating cycles               | 500                                       |
| Temperature range           | -40°C to +100°C, short-term up to +125 °C |
| Housing                     | Hood                                      |
| Gland body                  | Yes                                       |
| Cable entry                 | 1x lateral                                |
| Locking                     | Bolt for double lever                     |
| Protection (DIN EN 60529)   | IP 65 (mated and latched)                 |
| Protection (NEMA 250/UL50E) | 4 and 12 (mated and latched)              |

## Electrical characteristics

|                       |          |
|-----------------------|----------|
| Rated voltage, IEC    | 500 V    |
| Rated voltage, UL     | 600 V    |
| Rated voltage, CSA    | 600 V    |
| Rated impulse voltage | 6 kV     |
| Rated current, IEC    | 16 A     |
| Rated current, UL     | 16 A     |
| Rated current, CSA    | 16 A     |
| Contact resistance    | < 2 mOhm |
| Degree of soiling     | 3        |

|   |                                       |             |
|---|---------------------------------------|-------------|
| Creator: BEGE1/PDP<br>Released: IVSE1/PDP | Dokument: DB75009646EN<br>Version: 02 | Page 1 of 3 |
|---|---------------------------------------|-------------|

|                           |   |   |
|---------------------------|---|---|
| 75009646                  | <b>DATA SHEET</b>                             |  |
| Valid from:<br>25.02.2019 | <b>EPIC<sup>®</sup> Kit H-BE 16 SS TS M25</b> |   |

### Materials/Surfaces

|                                      |                                       |
|--------------------------------------|---------------------------------------|
| Contacts                             | Copper alloy, hard silver plated      |
| Insulating body                      | PC                                    |
| Flammability class according to UL94 | V0                                    |
| Housing                              | Aluminium alloy, powder-coated (grey) |
| Locking                              | Steel, zinc-plated                    |
| Housing seal                         | -                                     |
| Gland body                           | Brass, nickel-plated                  |

### Approvals

|                            |        |
|----------------------------|--------|
| VDE-Approval, VDE-REG.-Nr. | B437   |
| UL File Nummer             | E75770 |
| CSA File Nummer            | 053004 |

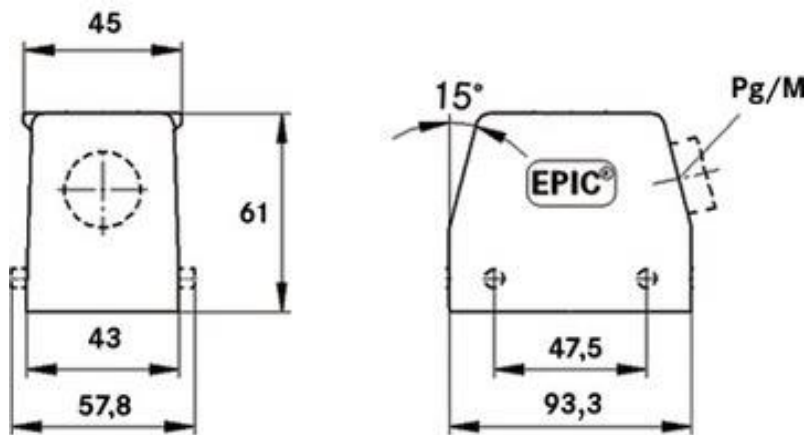


### Standards

Safety standards IEC 61984; UL 1977; CSA-C22.2

### Technical drawings

Housing dimensions



|   |                                       |             |
|---|---------------------------------------|-------------|
| Creator: BEGE1/PDP<br>Released: IVSE1/PDP | Dokument: DB75009646EN<br>Version: 02 | Page 2 of 3 |
|---|---------------------------------------|-------------|

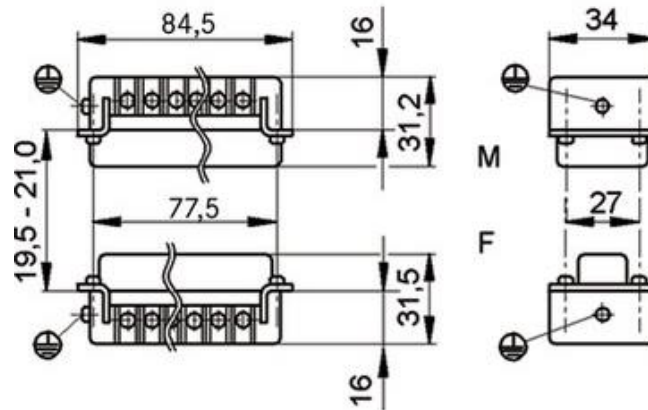
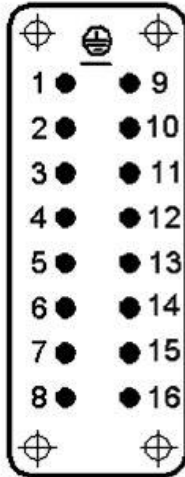
|                           |                                    |   |
|---------------------------|------------------------------------|---|
| 75009646                  | <b>DATA SHEET</b>                  |  |
| Valid from:<br>25.02.2019 | <b>EPIC® Kit H-BE 16 SS TS M25</b> |   |

Insert

Pin assignment

Dimensions

**F**



Automation



Industrial machinery and plant engineering



Mechanical resistance



Robust



Waterproof



Temperature-resistant

### Info

Universal, robust metal housings

Multifunctional insert for versatile applications

### Application range

Plant engineering, control engineering, plastics industry, light & sound technology

### Remark

Photographs are not to scale and do not represent detailed images of the respective products.

|   |                                       |             |
|---|---------------------------------------|-------------|
| Creator: BEGE1/PDP<br>Released: IVSE1/PDP | Dokument: DB75009646EN<br>Version: 02 | Page 3 of 3 |
|---|---------------------------------------|-------------|